



# Growing Forward

2024/2025 Foundry Impact Report

· F O U N D R Y ·

 **STpaul's**  
FOUNDATION



# With Gratitude

This year, we mark a powerful milestone: **10 years of Foundry**.

What began as a bold idea – an integrated, youth-centred space for health and wellness – has grown into a province-wide movement that’s reshaping how young people in BC access support. With your help, Foundry has grown into a trusted space for youth and families to turn to – whether in-person or online.

As we celebrate this decade of impact, momentum is building like never before.

In **May 2024**, we were honoured to open **Ṭíkxawicikimik – Foundry East Kootenay** in Cranbrook, our 17th Foundry centre. In the year ahead, we’re excited to open three more; **Foundry Surrey-Central**, **Foundry Burns Lake**, and **Foundry Tri-Cities** – supporting our goal of 35 centres across BC by 2028. These spaces reflect the diverse communities they serve, brought to life through powerful local partnerships and a shared commitment to youth well-being.

We are also proud to highlight **Tiera’s story** – a remarkable young person whose journey from accessing services to becoming an essential team member at Foundry Abbotsford exemplifies the heart of Foundry’s mission: to walk alongside youth as they find hope, healing, and purpose.

Throughout the last year, we’ve continued to use **data and lived experience** to guide our work. We’re working to ensure we reach the youth who need us most – including a focused effort to better connect with **young men**, through targeted campaigns that resonate with their unique needs and experiences.

Together, we’re building a future where every young person across BC knows that support is not only available – it’s accessible, welcoming, and made just for them.

Thank you for joining our movement.  
Thank you for growing our impact.

**With heartfelt thanks,**



A stylized white handwritten signature of Dr. Steve Mathias on a dark blue background.

**Dr. Steve Mathias**  
Co-Executive Director

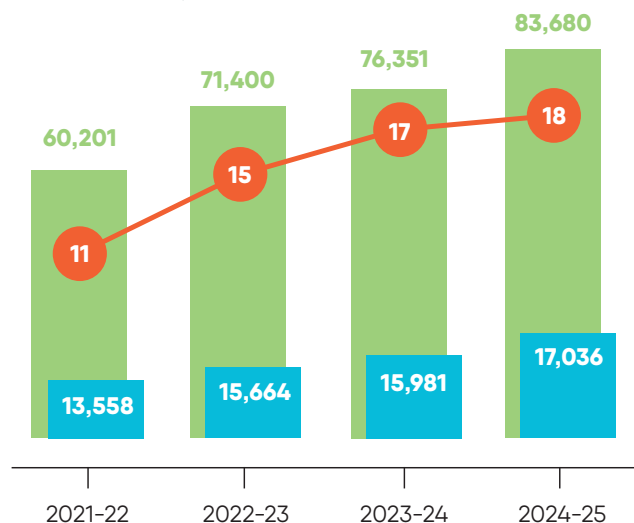


A stylized white handwritten signature of Dr. Karen Tee on a dark blue background.

**Dr. Karen Tee**  
Co-Executive Director

# Your support is helping more young people access life-changing services throughout BC

In Fiscal Year 2024/25:



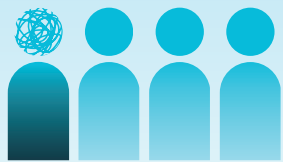
**83,680** visits

**17,036** youth

**18** Foundry centres including Foundry Virtual

\*Annualized figures have been updated to reflect revised counts and improved data accuracy. Please note that not all services are able to consistently capture data—particularly low-barrier supports such as harm reduction supply distribution and some group-based programming.

**1 in 4**



youth would not have sought help if Foundry didn't exist

**42%**

of first visits were for mental health services.

**18%**

of youth accessing Foundry across BC identified as Indigenous.

**1400+**

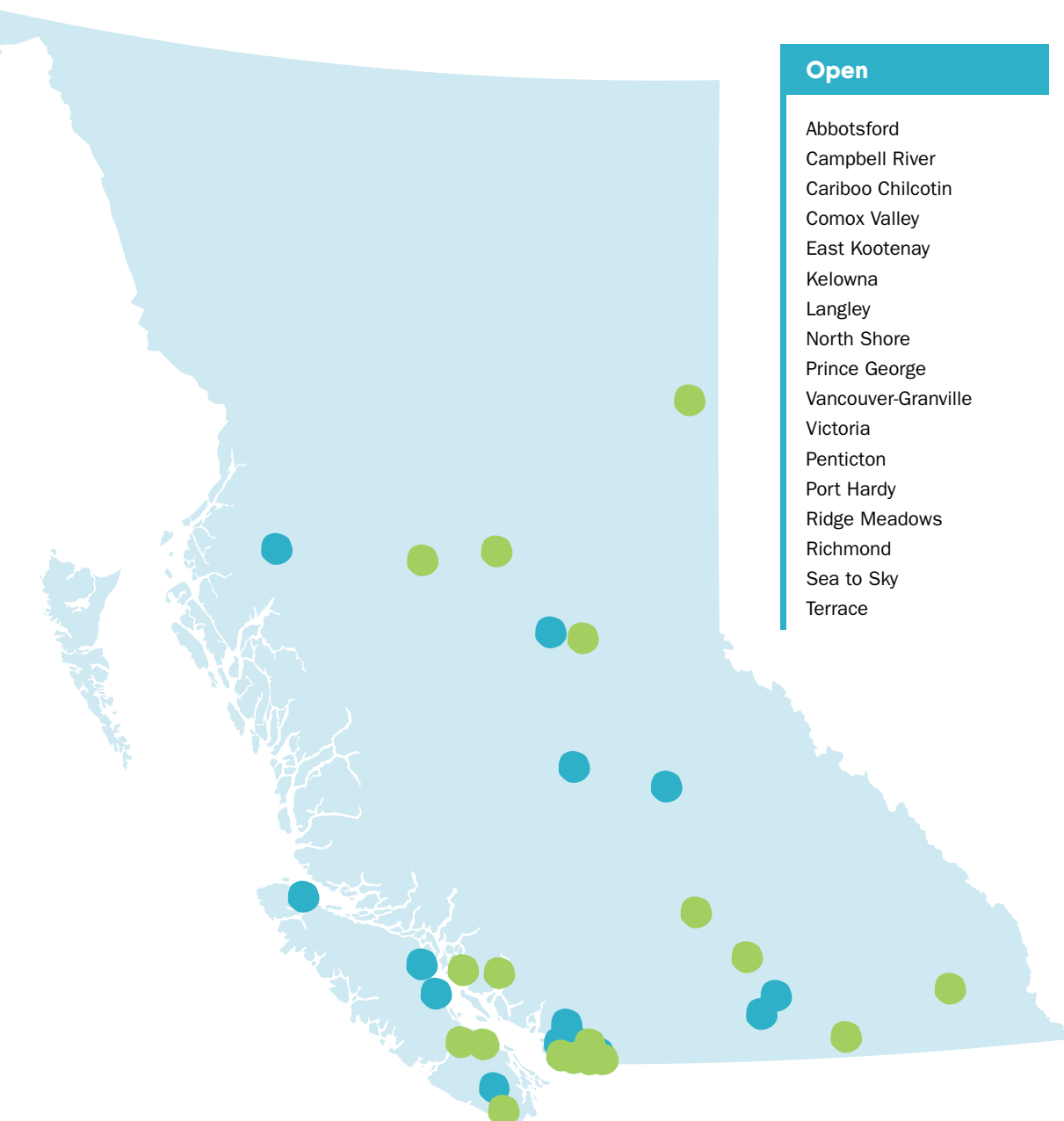
youth accessed substance use health services.

# Your support builds pathways to health.

## Reshaping BC's health and wellness landscape for young people.

With your support, Foundry is expanding from 17 to 35 centres across BC, plus virtual services. Together, we are doubling the Foundry network so that double the number of youth – including those in rural and remote communities – can access the support they need, when they need it.

Read more about the expansion [here](#).







# Tikxawicikimik – Foundry East Kootenay

In May 2024, we opened our 17th Foundry centre in Cranbrook: Tikxawicikimik – Foundry East Kootenay, operated by Ktunaxa Kinbasket Child & Family Service Society. Since opening, almost 1,000 new youth have already accessed services. This beautiful, purpose-built space —co-designed by and for youth— stands as a powerful reflection of Indigenous leadership and community-driven innovation in action.



## THIS LAND IS HOME.

Foundry's provincial work extends across lands that are home to many First Nations, Métis and Inuit Peoples today; with histories, knowledges and ways of being that are diverse and unique to every community in which we work. We strive to respectfully hold and nurture relationships with Indigenous Peoples, including Indigenous youth and family advisors, staff, community agencies and partners, who guide and inform our work.





**“Foundry is community, it’s connection, and it’s life-saving.”**

**-Tiera**

## Tiera’s Full Circle Moment.

### The life-changing impact of Foundry’s Wellness Program.

With encouragement from a close friend, Tiera bravely stepped into a Foundry centre in 2019 to access mental health support—and it set her on a new path.

A compassionate counsellor introduced Tiera to Foundry’s Wellness Program—activities designed to help youth connect with themselves and others. For Tiera, this included participating in goat yoga, virtual baking classes during COVID, and art sessions. These activities, offered at all Foundry centres across BC thanks to the generosity of donors, helped her discover connection, creativity, and community.

As her health journey continued and her confidence grew, Tiera found employment as a Wellness Group Facilitator at Foundry,

supporting outdoor adventures, art and photography classes, and culturally inclusive programs. In her new role, Tiera is now helping youth find the same connection and healing she once needed.

“Whether it’s attending a group, counselling session, or medical appointment, getting through the door is the hardest part,” Tiera explains. “Once you get here, you’re safe and in good hands.”

**Thanks to your support, Foundry is growing access to programs across the province.**

Learn more about [Tiera’s](#) amazing journey from Foundry youth to Foundry employee.



# 47%

of youth discovered Foundry through family and friends.

# 70%

of surveyed youth said Wellness reduced their reliance on screen-time for leisure.





**"It was the first time ...where I felt like I had somebody in my corner who was willing to support me and guide me in a completely non-judgmental way."**

**-Danny**

## **When everything feels like nothing, Foundry is here for you.**

**Foundry Virtual BC's "Here for You" Campaign addresses the stigma surrounding male-identifying youth's mental health.**

Launched in November 2024, "Here to Help" encourages young males ages 12-24 to seek support through Foundry's free and confidential Foundry BC app services or at a local Foundry centre.

Foundry shared Danny's story, whose journey exemplifies Foundry's impact. Once a high achieving kinesiology student and Olympic weightlifter, Danny faced burnout and depression, compounded by the stress of school, a part-time job and the stigma of help-seeking.

After his brother shared an online ad for Foundry's Work & Education Program, Danny accessed employment services, which led him to explore other forms of healing, including counselling to help with stress.

**Thanks to your support, Foundry is empowering young people to reclaim their voices and find well-being.**

**Learn more about the [foundrybc.ca/hereforyou](https://foundrybc.ca/hereforyou) campaign**



**Over**

**2,200**

youth accessed  
Foundry Virtual BC  
this fiscal year, a

**30%**

increase from  
last year.



**“I’ve gotten a lot more confident with transitioning into adulthood and being my own person.”**

**-Arsin**

## **Your Generosity Cultivates Safe and Inclusive Spaces**

**At times when judgment can feel louder than acceptance, Foundry creates spaces where all young people can be themselves and show up exactly as they are.**

For many young people, the journey to self-discovery can be filled with uncertainty, fear, and isolation. For queer and questioning youth, that path can feel even more daunting.

To Arsin, a gender-queer youth connected to Foundry Richmond, safety and inclusion means “being able to comfortably exist as myself and finding people that I can relate to. Feeling seen, and also seeing yourself in the people that work there”.

Across the Foundry network last year, over 1 in 3 youth who accessed services identified as sexual minorities (bisexual, gay, lesbian, or queer), and 1 in 5 identified as gender diverse. BC population estimates suggest 1 in 5 youth identify as a sexual minority and 1 in 20 are gender diverse.

The high proportion of equity-denied youth accessing Foundry reflects both the need for integrated, affirming services and Foundry’s critical role in creating safe, welcoming, accessible spaces for all youth and families across BC.

**This meaningful work is only possible thanks to your generous support.**

**Learn more about how [Foundry’s commitment to inclusion](#) is making a meaningful difference.**







**“Youth have a lot of trust in Foundry, and for the most part are really open and honest with me. It makes the research a lot easier when they already have trust in me because I’m part of Foundry Vancouver-Granville.”**

**–Sarah Adair**

## Embedding Researchers Within Foundry Centres

At Foundry Vancouver-Granville, the team recognizes the value of research to meet community needs. But with limited resources, it isn’t always possible to pursue opportunities for research.

Enter Sarah Adair, a research coordinator embedded at Foundry Vancouver-Granville.

Driven by the team’s research ideas and enthusiasm, Sarah plays a vital role in supporting multiple projects, connecting community partners, conducting research activities, consulting with staff and clinicians, and facilitating training.

### **Embedding researchers within Foundry centres supports:**

- Increased research capacity.
- Strengthened relationships and new opportunities for collaboration between Foundry Central Office and local communities.
- Clinician, staff, and leadership buy-in.
- A thriving research culture.
- Broader application of study tools and interventions across the Foundry Network.
- Mobilization of research findings locally, provincially and nationally.

Learn more about [Foundry research](#):



**Dr. Skye Barbic** awarded the prestigious **Canada Research Chair in Integrated Youth Services**, recognizing her immense contributions to youth mental health outcomes.

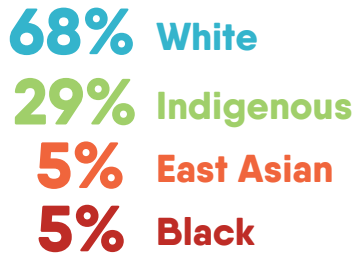


# Youth Experience Survey 2024/25

The Youth Experience Survey (YES) is an annual, anonymous survey (not linked to Toolbox data), for youth accessing Foundry services. By understanding youth experiences we can better meet the needs of youth and guide service improvement.

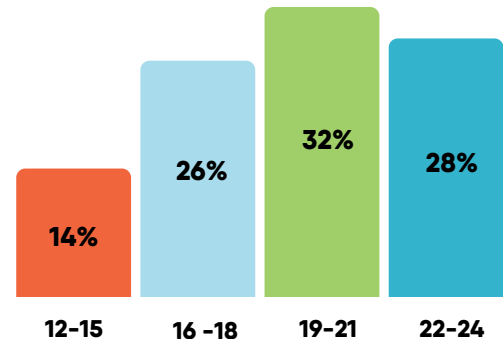
We heard from 803 youth across BC who came from diverse communities.

## Racial Identity



Youth could select more than one racial identity  
Racial categories <5% are not shown

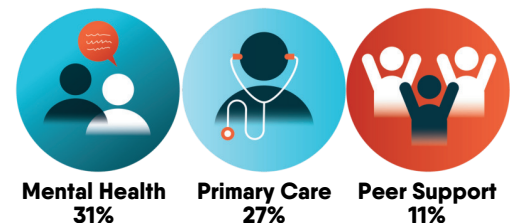
## Age Range



## Equity Denied Groups



## Top 3 Services Accessed



33% accessed more than one service at visit

20%: 1st time visiting Foundry

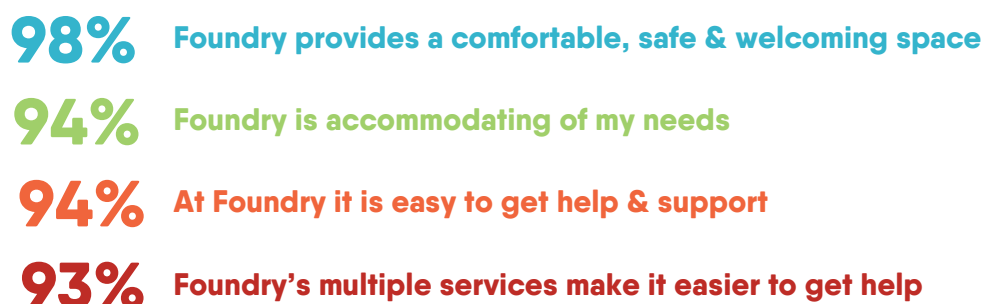
15%: 2-5 visits to Foundry

65%: 6 or more visits to Foundry

## Experience & Satisfaction at Foundry

Youth rated their experiences with Foundry staff highly, (4.6/5) across all areas, (personalized care, safe and trusting relationships, discrimination and judgement free, skilled and experienced).

### Youth agreed/strongly agreed that...





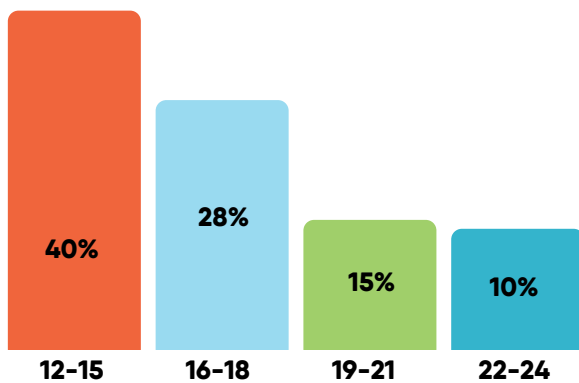
# Family Experience Survey 2024/25

The Family Experience Survey (FES) is an annual, anonymous survey (not linked to Toolbox), for family members accessing Foundry.

At Foundry, “family” is uniquely defined by each young person and may include anyone who supports or advocates for their wellness. Family, whether by birth, choice or circumstance, holds a significant role in supporting a young person by fostering a sense of belonging and hope through their shared experience.

**We heard from 191 family members across BC who shared that Foundry is a low-barrier, supportive, and welcoming space that has positively impacted both them and their youth.**

## Youth supported by family members were generally younger



Age Groups <11 yrs & >25yrs were less than 5%

## Top 3 Services Accessed By Family



**Family Peer Support**  
47%



**Family Counselling**  
12%



**Family Support Groups**  
10%

**86%** of Family members accessed services in-person

**65%** of family members receiving support at Foundry had a young person in their life also accessing Foundry services

“Our family runs better with a child that has mental health support.”

“Foundry was educational and supportive for my family needs, especially for my youth.”

“Foundry helped me to understand the mental challenge my youth has, and to be more patient with them.”

“These services are life-changing.”

## Family members agreed/strongly agreed that...

**98%** The services provided to the young person at Foundry met their needs

**98%** If a friend was supporting a young person who needed this sort of help, I would suggest Foundry

**98%** Overall, I am satisfied with the Foundry services provided to the young person I’m supporting

# Thank you for bringing life-changing resources and services to young people, families and communities throughout BC.



"The staff at foundry always go above and beyond with their care for me, I have easy times making therapy appointments and seeing the life skills worker, they do their best to support me even when I'm not booked in to their day. I always feel like I have people to reach out to and the staff are always amazing and ready to help."

"I appreciated the personal experiences that the staff had shared with me. It makes it more manageable that I'm not the only one going through this."

"They do amazing here, everyone is very kind and respectful and makes everyone feel welcomed when walking in the door."

"I appreciated the personal experiences that the staff had shared with me. It makes it more manageable that I'm not the only one going through this."

"Foundry family services have transformed our parenting."

"Foundry is always welcoming, making it easy for youth to engage in their health and mental well-being. They are great wrap around services for individuals in need."



To learn more about how you can power Foundry to empower more young people, please contact:  
Molly Loudon | 778-987-9781 | [mloudon@foundrybc.ca](mailto:mloudon@foundrybc.ca)

[foundrybc.ca/donate](https://foundrybc.ca/donate)