

• F O U N D R Y •

A Bold Vision, A Lasting Impact.

Creating a healthy future for young
people across British Columbia



The urgent need for early intervention.



Young people currently face unprecedented challenges to their wellness.

In Canada, 1 in 4 young people ages 15 to 24 report experiencing mental ill health or substance misuse – more than any other age group. Over 80% of problematic substance use begins by the age of 20 and 70% of mental health concerns beginning before the age of 24. Rates for depression and anxiety are on the rise. **And toxic illicit drug overdoses are the number one killer of youth aged 10 to 19 across British Columbia (BC).**

Mental health and substance use challenges require early intervention. But fewer than 25% of youth are accessing appropriate care.

When refused or confused by a system of multiple doors and uncoordinated services, many youth turn to Emergency Departments. Or spend months on waitlists. Or simply give up. Families are frustrated. And things have been getting worse.

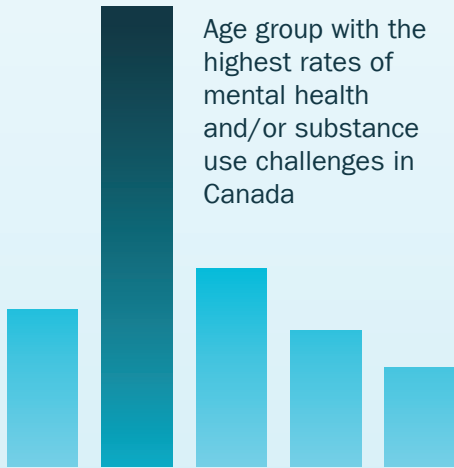
Our health system and communities urgently need coordinated, accessible, low-barrier services designed with and for youth. For a strong future, we need vibrant and healthy young people living full, productive lives.

Foundry offers young people ages 12 to 24 and their caregivers the appropriate help they need and deserve, when they need it – within their communities and online.

What the numbers tell us.

12 – 24

Age group with the highest rates of mental health and/or substance use challenges in Canada



1 IN 4

Canadian youth affected by mental health or substance use challenges

70%

of mental health concerns in Canada begin in childhood or teen years



200,000

and more young people in BC struggle with mental health every year

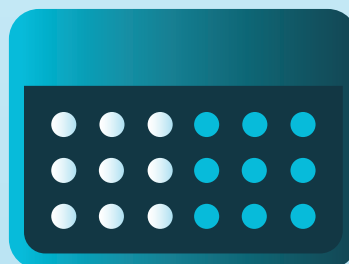


#1

toxic drug overdoses are the leading cause of death of British Columbian children aged 10-19

<25%

of youth are currently receiving the mental health services they need



50%

of youth coming to Foundry have thought about suicide in the past 90 days

A solution built in BC.



Foundry opened North America's first centre to offer integrated youth services a decade ago, in downtown Vancouver. Made possible through the generosity of donors, Foundry's healthcare model was simple, yet transformational: remove barriers and improve access by co-locating all services in one purpose-built space that's co-designed with and for youth.

Mental health care, substance use support, physical and sexual health, youth and family peer support, and social services that empower youth in living a good life. All through one door, in an easy to access location or online, with walk-in availability.

No charge. No referrals needed. No waitlists.

Foundry's innovation confirmed that easy access to youth-friendly integrated services empowers young people to seek help sooner, reduces stigma and significantly improves outcomes. Life-changing results inspired Foundry's provincial expansion into a world-renowned collaborative network of centres.

Soon, and with your support, young people and those who love them will have access to 35 centres in urban and rural communities throughout BC, plus Foundry's provincial virtual services and the Foundry BC app.

With Foundry centres in communities and with unlimited access to Foundry's virtual services, young people and families will no longer have to ask, "Where can we go for help?"

This is Foundry.

Access virtually and in person.
No referrals required.
Services are free.
All in one place.

Mental Health.

Free walk-in counselling and therapy groups to help address and overcome concerns before they become overwhelming.

Physical & Sexual Health.

Family doctors and nurse practitioners provide physical health, sexual health, gender-affirming care, medication and more.

Peer Support.

Youth and family with lived or living experience provide guidance, information, navigation and mentorship to others facing similar situations.

Integrated Youth Services

Substance Use Support.

Prevention, counselling, harm reduction supplies and medication, system navigation all in a non-judgemental environment.

Social Services.

Employment, education, wellness activities, and other non-clinical resources that empower youth in living a good life.

Unprecedented impact.

At the time of a young person's first visit:

Distressed

82%

are experiencing high levels of distress.

Suicidal thoughts

50%

have thought about suicide in the past 90 days.

Poor mental health

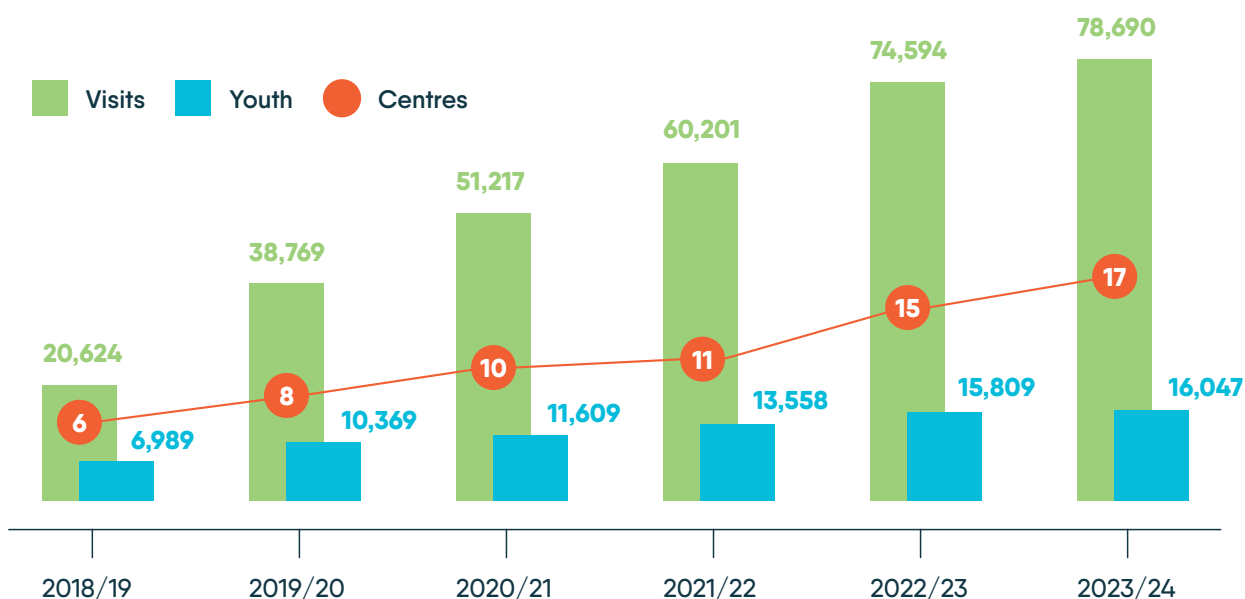
76%

rate their mental health as fair or poor.

Witness violence

36%

have seen or experienced violence in the last 3 months.



After accessing Foundry services, youth report:

Satisfied

95%

were satisfied with Foundry and its services.

Easy access

95%

agreed having services in one place made it easier to get help.

Tell a friend

97%

would suggest Foundry to a friend.

Well-equipped

91%

feel well-equipped to manage their health situation.

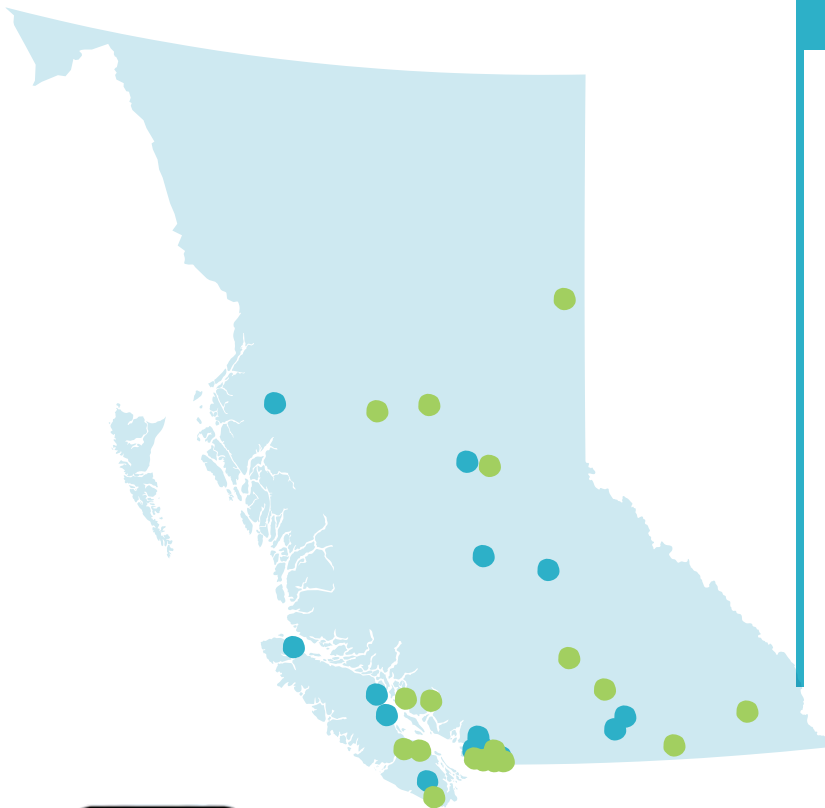
Youth-driven pathways to health.

Foundry is transforming health and social services so all young people across BC, including those in isolated and under-resourced areas, can instantly access the integrated youth services they need and deserve.

Foundry's expansion is co-designed with and for youth and communities. Collaboration is also essential in fundraising for growth, as substantial capital investments from government, philanthropy, and local community

partnerships are all essential to opening new centres and accelerating timelines.

Our bold vision of reshaping BC's health and wellness landscape for youth is only possible through meaningful partnerships with donors and funders, youth and caregivers, community organizations and health authorities, First Nations, school districts, and governments. Collaborating. Learning. Growing.



Open

Abbotsford
Campbell River
Cariboo Chilcotin
Comox Valley
East Kootenay
Kelowna
Langley
North Shore
Prince George
Vancouver-Granville
Victoria
Penticton
Port Hardy
Ridge Meadows
Richmond
Sea to Sky
Terrace

Coming Soon

Burnaby
Burns Lake
Chilliwack
Fort St. John
Kamloops
Port Alberni
qathet
Quesnel
Snuneymuxw
Sooke-West Shore
South Surrey
Sunshine Coast
Surrey-Central
Tri-Cities
Vancouver
Vanderhoof
North Okanagan
Kootenay Boundary



Foundry services can also be accessed virtually through the Foundry BC App from anywhere in BC.

Learn more: foundrybc.ca/virtual





The 20/20/20 Campaign is a once-in-a-generation opportunity to support Foundry's \$20 million goal to open 20 Foundry centres so over 20,000 additional young people across BC can access life-changing health and wellness services.

When young people experience challenges in their lives, large or small, whether related to mental health, substance use, physical health or their identity, it can be easy to feel alone and isolated. Having immediate access to confidential and safe spaces to speak to trusting professionals is critical to supporting youth and those who love them.

Now, more than ever.

Young people need easy access to compassionate, appropriate health resources in low-barrier spaces where they live, learn, and spend time with their peers. Addressing health concerns before they impact lives and relationships.

To meet growing demand for integrated youth services, Foundry has been mandated by the Ministry of Health to expand to 35 centres across BC by 2028, plus virtual services. The provincial government will cover ongoing operating expenses, and has committed \$1.5M in capital funding per centre. But this covers less than half the overall expenses. Escalating construction costs and limited fundraising resources – especially in rural and remote communities – have created significant funding gaps and construction delays.

Thousands of young people have benefited from Foundry, but thousands more still need help overcoming life's challenges. Our work is far from done. Join us in expanding this vital support.



Now is the time.

Help us accelerate Foundry's expansion until every young person across BC – including those in rural and remote communities – can easily access the help they need, when they need it.

Expanding to 35 Foundry centres, plus virtual access and multiple Foundry Satellite locations in smaller communities, will lead to earlier case identification and prevention, raise awareness about Foundry, normalize help-seeking among youth, and rapidly improve outcomes.

Foundry's expansion is an ambitious goal in a province the size of BC. **Double our Foundry network to double the number of youth accessing services each year.** We can achieve this together. Your support will accelerate development, helping tens

of thousands more youth receive support earlier, and significantly impacting an entire generation.

Help youth achieve their best outcomes sooner by supporting Foundry's \$20 million expansion of 20 additional centres so over 20,000 additional young people across BC can access life-changing resources.

It is a bold vision - but with the commitment from our communities, government and philanthropic partners like you, it is a vision we can achieve. And one worth striving for.



Centring Integrated Youth Services Excellence in Vancouver.

Transform Foundry Vancouver-Granville from a proven prototype to the world-class hub for youth mental health and wellness.

Foundry Vancouver-Granville, our first centre, is also our smallest, struggling to support one of Canada's largest and most diverse municipalities.

With growing demand and an expiring lease, Foundry Vancouver-Granville is in urgent need of a larger space. We need your support to move this forward.

The current 4,500 sq ft centre is too small to fully support the integrated service model or meet demand, in a 110-year-old building that lacks daylight and accessibility, in a location at Drake and Granville that does not always feel safe.

Over a six month period, 400 youth were turned away due to space constraints. With a lease expiring in 2026, we urgently need a new downtown centre that is double the size, close to transit, and co-designed with

youth and staff to be welcoming, accessible and safe. Purpose-built to reflect lessons learned, serving as a flagship Foundry.

Additionally, Foundry Vancouver-Granville, Foundry Central Office, and Foundry Research currently operate in separate buildings. A significantly larger space could accommodate these teams and additional service partners to optimize both lease costs and collaboration.

Join us in bringing to Vancouver a purpose-built flagship Foundry, co-designed with and for youth, and a world-class cornerstone of excellence in integrated youth services.

**To learn more
about the new
[Foundry Vancouver.](#)**



Bridging the Divide Between Research and Practice

Foundry Research empowers youth and communities to co-create actionable evidence that drives service innovation.

Foundry does research differently. We co-create research alongside youth. We embed research within communities. We collectively produce practical, actionable knowledge that sparks lasting change in the lives of young people, caregivers and staff across BC by centring their voices in our research.

Relationships shape our work, enabling co-created research that is meaningful and relevant to youth, families and service providers. Our goal is to have an embedded researcher at every Foundry centre across BC.

Focusing on youth and family experiences and engaging directly with staff and communities is how we bridge the divide between research and practice, fill gaps in youth health understanding, and drive service innovation.

Relationship-based research embedded within impacted communities is innovative but unconventional, falling outside traditional research grant opportunities.

To do research differently, we need to fund research differently.

Support research and evaluation that innovatively centres youth voices through co-design, collaboration, and community integration. To learn more, visit www.foundrybc.ca/research.

Help the Foundry Research team achieve groundbreaking evidence through:

Co-Design: Involving youth and families in research.

Community-based solutions: Building research capacity within communities.

Collaboration: Supporting a collaborative model with researchers embedded at Foundry centres.



“My experience as a Youth Advisor collaborating on research projects has provided me with a broader perspective on how research can drive meaningful change.”

- Preet

Breaking Barriers. Changing Futures.

Amira

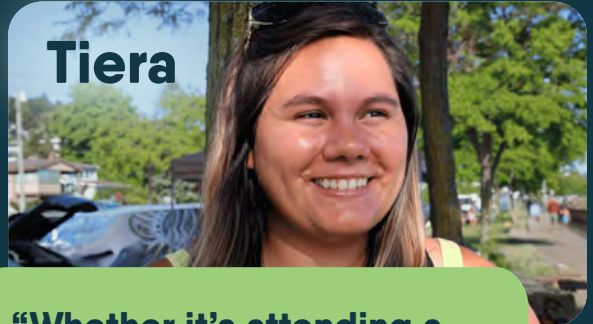


“Foundry is saving lives because young people can get the help they need, free of cost, without having to wait.”

Watch Amira's story here:



Tiera

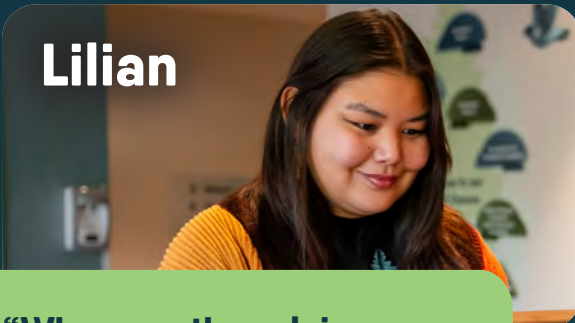


“Whether it’s attending a group, counselling session or medical appointment, getting through the door is the hardest part. Once you get here, you’re safe and in good hands.”

Discover Tiera's amazing journey from Foundry youth to Foundry employee.



Lilian

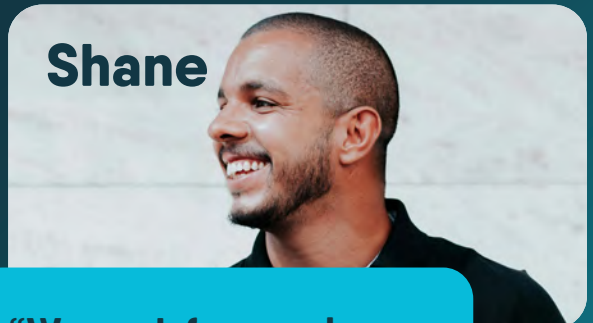


“When youth reclaim and reconnect with their traditions and culture, it helps them find and make a new path, a healthier path, of their own.”

Discover how Foundry creates culturally-informed spaces:



Shane



“We work from a place of not wanting others to feel alone on their journey helping their loved ones.”

Family Peer Support is offered at centres and online:



This Land is Home.

Foundry's provincial work extends across lands that are home to many First Nations, Metis, and Inuit Peoples today; with histories, knowledges and ways of being that are diverse and unique to every community in which we work. We strive to respectfully hold and nurture relationships with Indigenous Peoples, including Indigenous youth and family advisors, staff, community agencies and partners, who guide and inform our work.



Foundry is a provincial program of Providence Health Care (PHC), with St. Paul's Foundation serving as the registered charitable partner for PHC. Foundry's provincial implementation team, Foundry Central Office, is located in Vancouver, British Columbia. Foundry works hand in hand with St. Paul's Foundation to raise philanthropic funds for Foundry's provincial initiatives.

Foundry c/o St. Paul's Foundation
178 - 1081 Burrard Street, Vancouver, BC. V6Z 1Y6

Charitable Registration Number: 11925 7939 RR0001

**Your support will bring
life-changing resources and
services to young people,
families and communities
throughout BC.**

To learn more about transforming healthcare for youth, please contact:
Molly Loudon | 778-987-9781 | mloudon@foundrybc.ca
foundrybc.ca/donate