

Foundry central office acknowledge, with gratitude, that we are a settler organization and our place of work is on the ancestral, traditional and unceded territories xʷməθkwəy̓əm (Musqueam), Skwxwú7mesh (Squamish), and selílwitulh (Tsleil-waututh) Nations.

The Experience Project

PAID RESEARCH PARTICIPANTS NEEDED

Are you between the ages of 12-24?
Do you have lived experience with substance use?

• FOUNDRY •
WHERE WELLNESS TAKES SHAPE

Providence
HEALTH CARE
How you want to be treated.

 **CHÉOS**
Centre for Health Evaluation
& Outcome Sciences

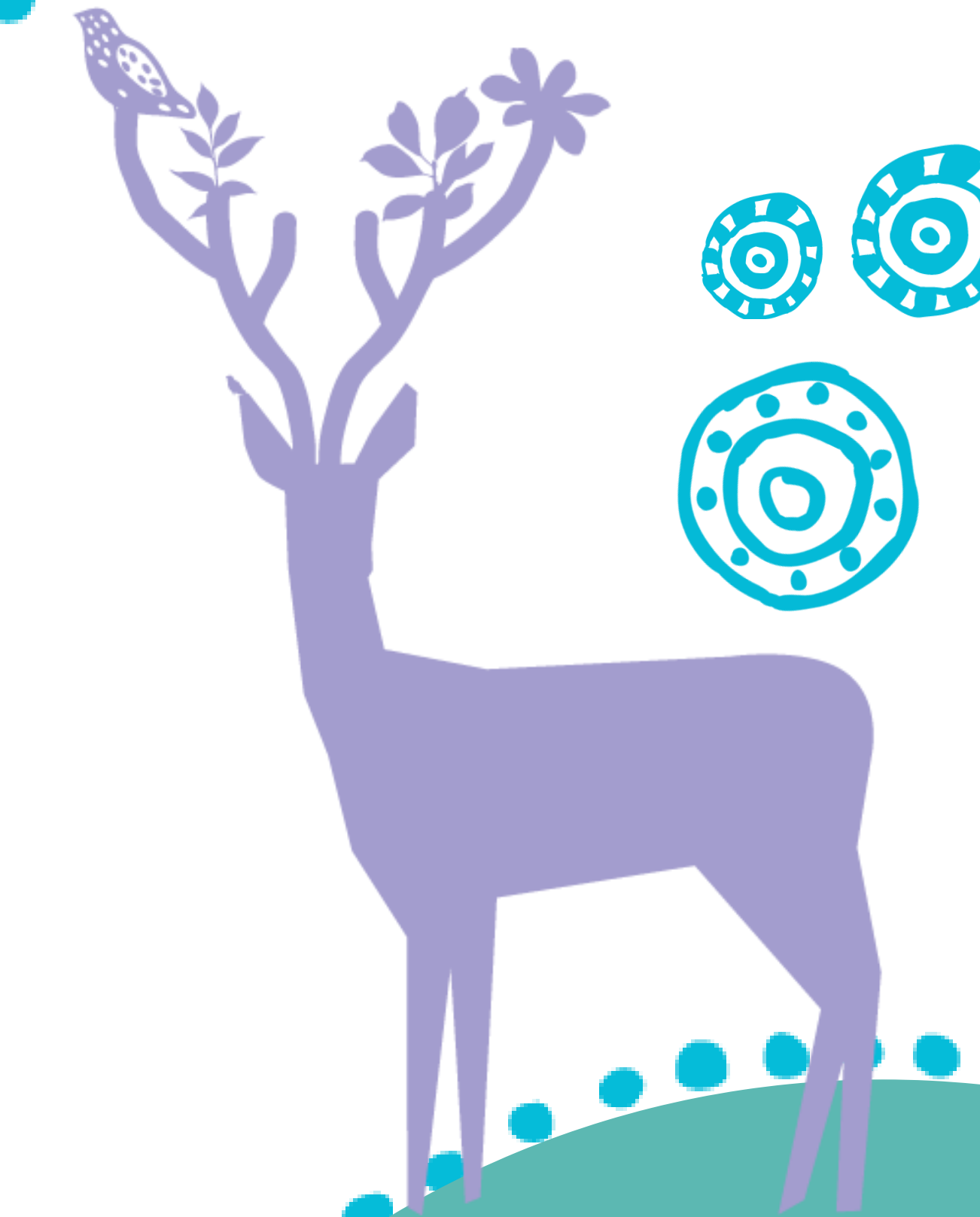
 **THE UNIVERSITY OF BRITISH COLUMBIA**

WE WANT TO LEARN ABOUT
YOUR EXPERIENCE ACCESSING
SUBSTANCE USE SERVICES
AND DISCOVER WHAT IS
IMPORTANT TO YOU.

- WHAT WILL BE INVOLVED
WITH PARTICIPATING?
- 1-hour virtual interview
 - 2 anonymous online surveys
 - **\$30 gift card** for participating

BIPOC-specific interviews available for those who identify as Black, Indigenous and people of colour

Disclaimer: people who like, follow, or share this post may be personally identified with it.



Version 06
November 18, 2020

FOR MORE INFORMATION EMAIL
ROXANNE TURUBA AT
RTURUBA@FOUNDRYBC.CA OR
CALL/TEXT 807-356-1188.

This study is being conducted by Foundry Central Office and principal investigator Dr. Skye Barbic (REB #H20-01815). This study is funded by Health Canada.